

Innovative solutions for the efficient implementation of legal due diligence requirements on human rights risks and deforestation



01

Introduction of GRAS

02

Analysis of social and environmental risks

03

Monitoring of deforestation-free supply chains



01 Introduction of GRAS

GRAS is a comprehensive solution to implement and monitor sustainable and deforestation-free supply chains and implement respective commitments



Identifying deforestation and degradation of high biodiverse areas

Implementing secure and efficient **monitoring** of global supply chains



Mapping and managing sustainability risks in agricultural production

Supporting credible and cost-efficient **certification** processes



GRAS is an integrated one-stop-shop solution to map sustainability information and analyse compliance with relevant sustainability criteria



Biodiversity Areas



Deforestation



High Carbon Stock



Social Indices



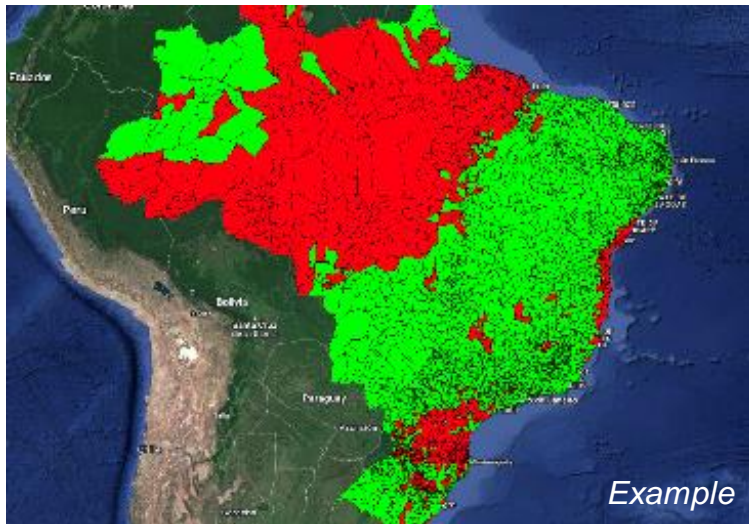
GRAS has been supported by:



aufgrund eines Beschlusses
des Deutschen Bundestages

GRAS supports the analysis and monitoring of supply chains on different levels, integrating the approaches into innovative analysis and reporting tools

The risk assessment approach enables efficient identification of high-risk areas in the supply chain. Detailed analyses at field and plantation level verify compliance with deforestation criteria



Risk assessment of sourcing regions, administrative or plantation level

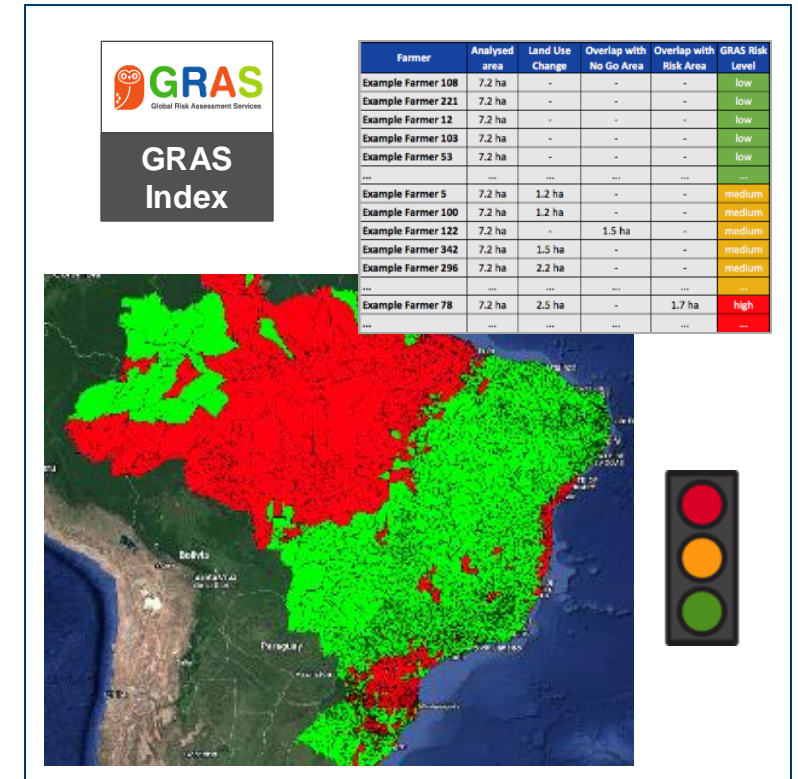


Detailed analysis of land use change



Interactive monitoring and reporting tools

GRAS risk assessments can be implemented globally and take into account relevant data sets on environmental and human rights topics





02 Analysis of social and environmental risks



German Act on Corporate Due Diligence in Supply Chains focusses on human rights risks

- Effective for companies with >3000 employees since January 2023 (from January 2024 also for companies with >1000 employees)

Child labour

Forced labour & Slavery

Freedom of association

Occupational Health & Safety

Discrimination and unequal treatment

Withholding of an adequate wage

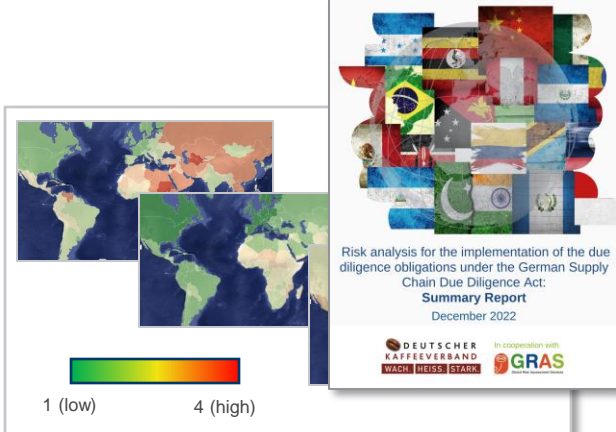
Environmental Risks and Damage harmful for people

Unlawful taking of land, forest and waters

Inappropriate use of security forces

GRAS supports German companies with a sector and country-specific risk analysis of human rights violations and manages a grievance mechanism

- Independence and confidentiality
- Information on accessibility, responsibility and implementation is publicly available
- Access for potential stakeholders and anonymity



- Identification of risks as well as prioritisation and weighting
- Disclosure of results to internal decision-makers
- Conducted annually as well as on an ad hoc basis in case the risk situation changes

Powered by:

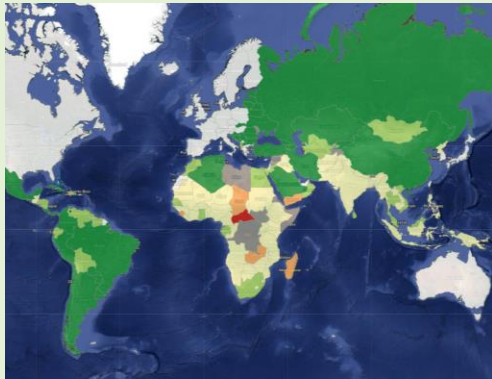
DEUTSCHER KAFFEEVERBAND

In co-operation with:

GRAS
Global Risk Assessment Services

Ear4U

The quantitative basis of the risk assessment is the literature review and indices & statistics. The results of additional approaches are added qualitatively



Indices & statistics



Literature review

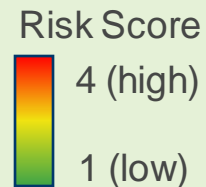
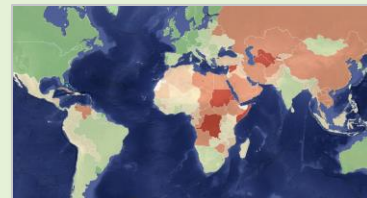


Georeferenced and subnational data

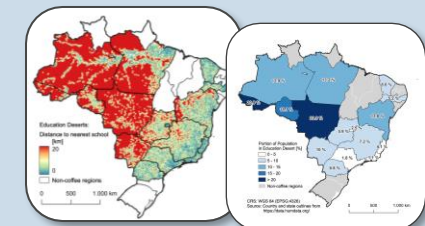


Structured internet research

Quantitative risk evaluation per criteria and country



Qualitative supplement with country-specific and subnational information



Overview of results in summary report & 18 concise country reports

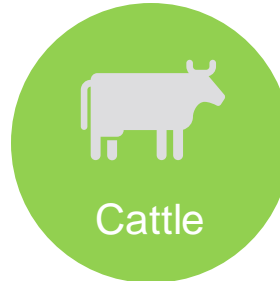


03 Monitoring of deforestation-free supply chains

Obligations described in the draft version of the EU Regulation

Proof that products are **deforestation-free** and **legal**

- Cut-off date for deforestation: December 31, 2020
- In accordance with all relevant legislation in force in the producing country



Collection of **farmer information and field coordinates/ outlines**

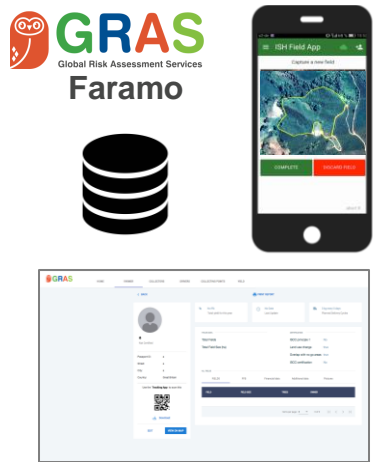
Provide information that production is **deforestation-free and legal**

Conduct a **risk assessment**

Passing on the information **through the supply chain**

GRAS and 4C provide tools to collect and analyse relevant data for specific plantation areas, e.g. collecting geo-coordinates, analysis of deforestation

Collecting information



The image shows the GRAS Faramo logo, a database icon, a smartphone displaying the 'GRAS Field App' interface, and a desktop web application interface with a QR code.

- Mobile app for efficient data collection on the ground
- Collect basic farmer data
- Geo-coordinates & plantation outlines
- Photos of legal documents
- Questionnaire on legal requirements
- Farmer management system
- Train the trainer approach

FARAMO - Management, analysis and visualization of plantation outlines and production data



The image features the 4C logo (a green globe with '4C' in orange), a blue location pin icon, a photograph of a coffee plantation, and an aerial map of the same plantation with green circles and purple polygons marking specific areas.

4C certification includes the collection of geo-coordinates of farmers

Identifying deforestation

Examples

Sentinel 2 (ESA, Copernicus):

- 10x10m spatial resolution
- Launch Sentinel-2A: 2015
- Images available every 5 days

Landsat (NASA):

- 30x30m spatial resolution
- Launch Landsat 4/5: 1982/84
- Landsat 8/9 available every 8 days

GRAS uses remote sensing technology to detect land use change and deforestation



Sentinel-2



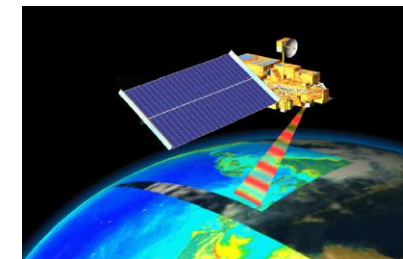
SPOT



PALSAR



Landsat

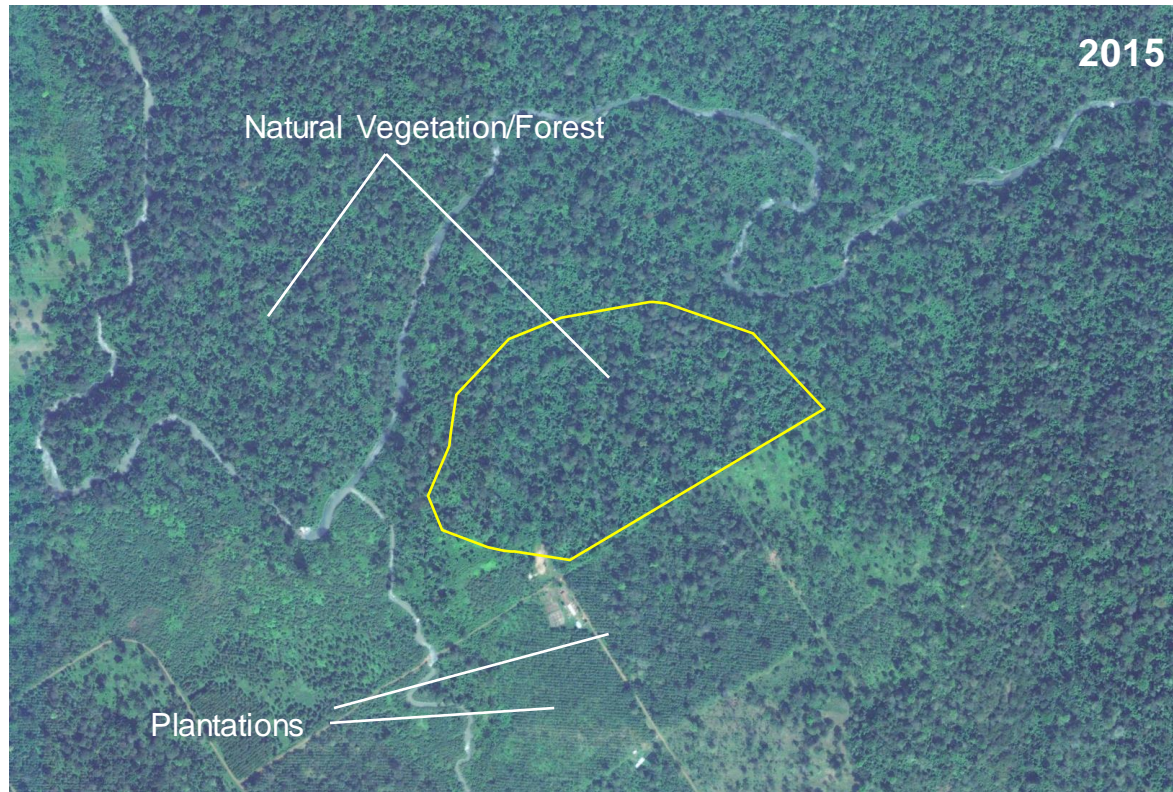


MODIS



LiDAR

GRAS uses high resolution satellite images and additional datasets on forest density and height to identify and verify the conversion of forest to plantations



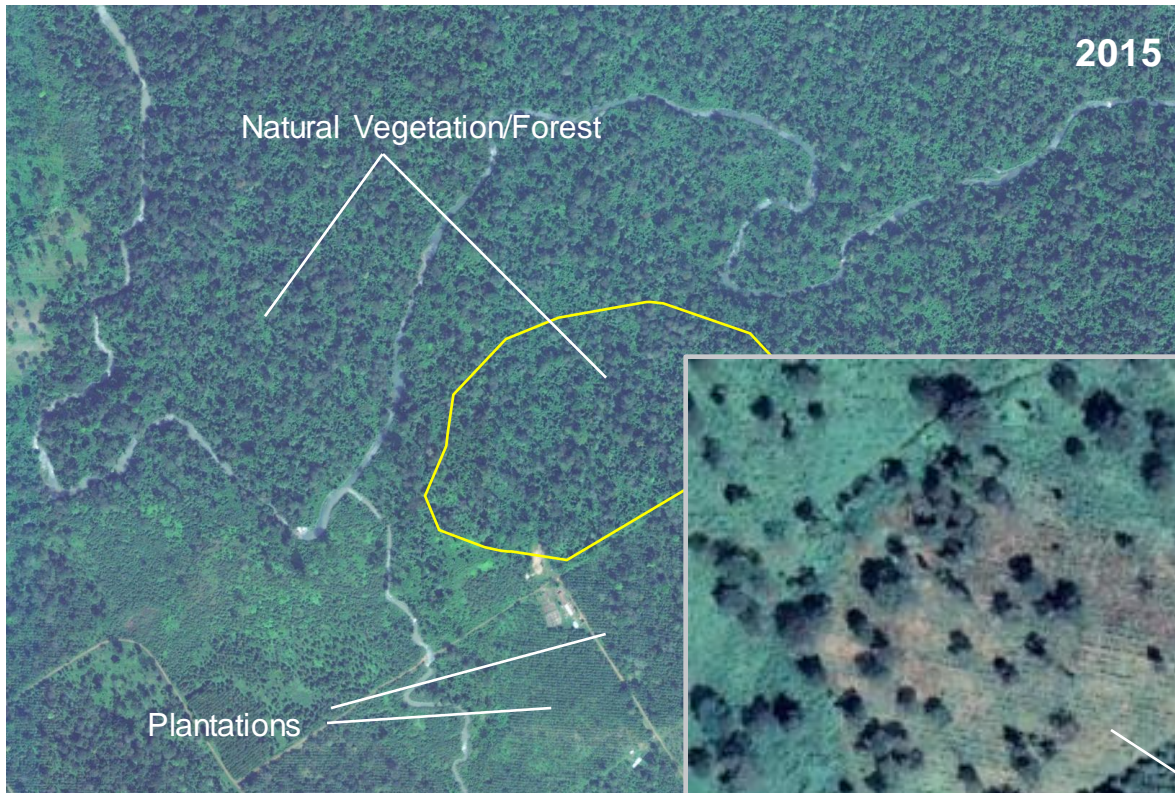
Source: Maxar Technologies



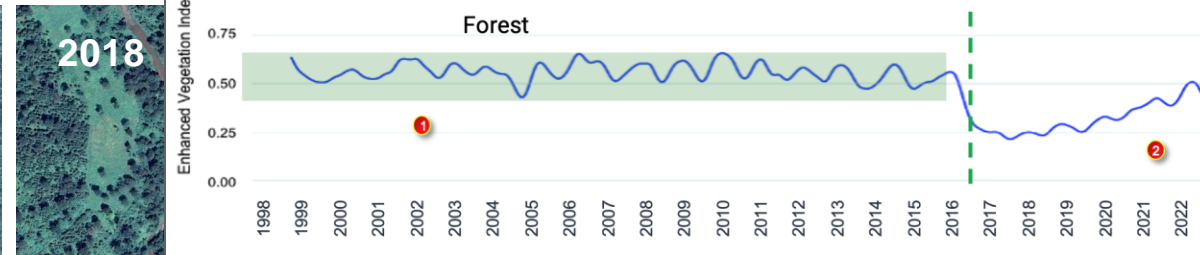
Source: CNES / Airbus

Example

EVI time series support the identification of the point of time of land use change activities and the verification of compliance with deforestation criteria



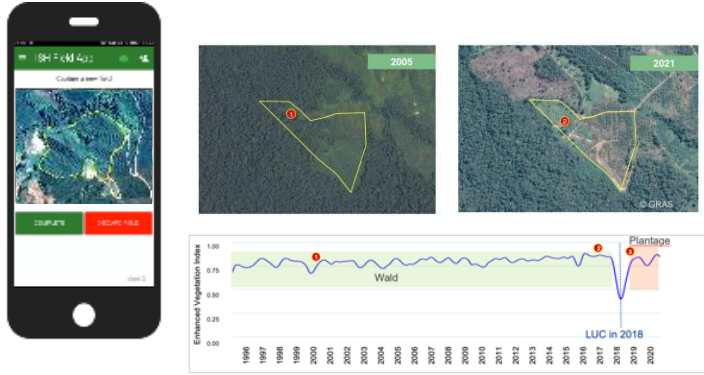
Source: Maxar Technologies




Source: CNES / Airbus

Example


GRAS can conduct regulation-specific risk assessments and provide a tool to pass on information through the supply chain




• Mapping of plantation areas
• Analysis using satellite data and innovative evaluation methods



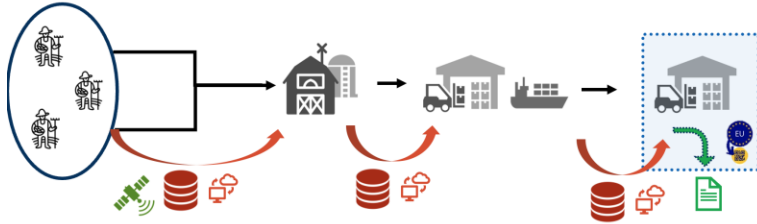
Collection of geo-coordinates and proof of freedom from deforestation




• Consideration of all relevant environmental and human rights criteria of the EU regulation



Risk assessment



• Independent traceability platform
• Passing on of farmer information through the supply chain by „digital handshake“



Traceability

GRAS is ready to support companies globally with social and environmental risk assessments and monitoring of zero-deforestation supply chains

GRAS supports the fulfillment of Due Diligence and No-Deforestation obligations on multiple levels:



Country- and sector specific analysis of human rights & risks deforestation risks



Analysis of deforestation-free supply chains and traceability to producers



Tools to collect producer data and geo-coordinates and reporting



Thank you very much!